



ANNEX H

PRESERVED/TRANSPLANTED PLANT
SPECIES OF CONSERVATION
IMPORTANCE MONITORING



ANNEX H1

PRESERVED PLANT SPECIES OF
CONSERVATION IMPORTANCE

Contract No.: NL/2020/02
Tung Chung New Town Extension - Salt Water Supply System
Monthly Report (27 September 2024)
In-situ Plant Species of Conservation Importance - Photographic Records



G01_30-R001



G01_30-R002

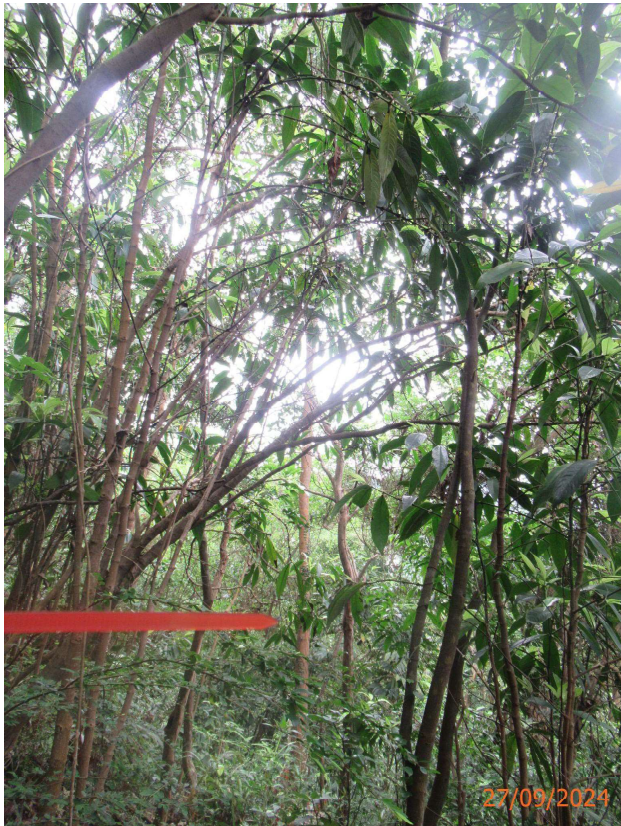


G01_30-R003



G01_30-R004

Contract No.: NL/2020/02
Tung Chung New Town Extension - Salt Water Supply System
Monthly Report (27 September 2024)
In-situ Plant Species of Conservation Importance - Photographic Records



G01_30-R005



G01_39-R01_Inaccessible



G01_39-R02_Inaccessible



G01_81-RT-01

Contract No.: NL/2020/02
Tung Chung New Town Extension - Salt Water Supply System
Monthly Report (27 September 2024)
In-situ Plant Species of Conservation Importance - Photographic Records



G01_81-RT-02 (T1535)



G02_29-R007



G02_29-R013



G03_44-R014

Contract No.: NL/2020/02
Tung Chung New Town Extension - Salt Water Supply System
Monthly Report (27 September 2024)
In-situ Plant Species of Conservation Importance - Photographic Records



G03_44-R015



G03_44-R017



G04_21-R03



G04_45-R011

Contract No.: NL/2020/02
Tung Chung New Town Extension - Salt Water Supply System
Monthly Report (27 September 2024)
In-situ Plant Species of Conservation Importance - Photographic Records



G04_83_84_85-R04 (T1788)



G04_83_84_85-R05 (T1572)



G04_83_84_85-R06



G04_83_84_85-R07

Contract No.: NL/2020/02
Tung Chung New Town Extension - Salt Water Supply System
Monthly Report (27 September 2024)
In-situ Plant Species of Conservation Importance - Photographic Records



G04_83_84_85-R08



G04_83_84_85-R09



G04_83_84_85-R10



G04_83_84_85-R11

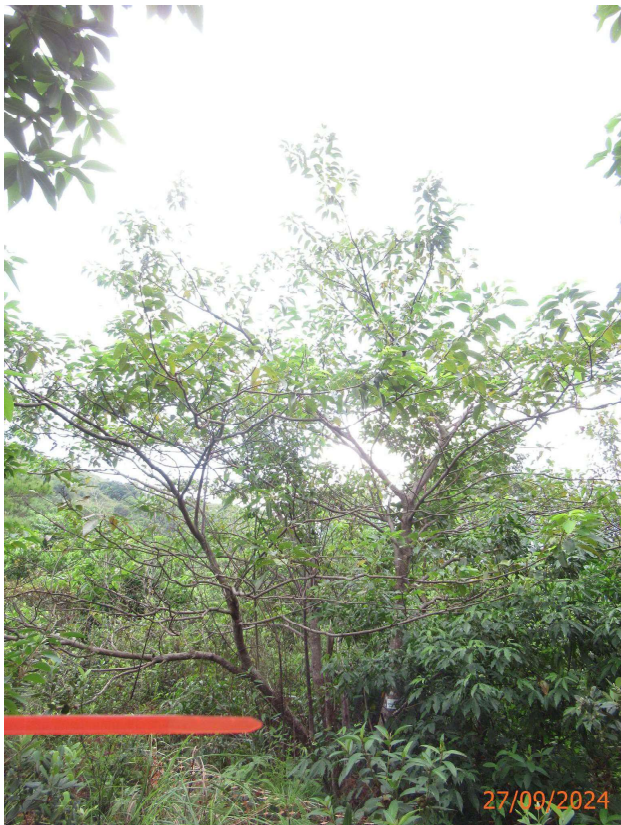
Contract No.: NL/2020/02
Tung Chung New Town Extension - Salt Water Supply System
Monthly Report (27 September 2024)
In-situ Plant Species of Conservation Importance - Photographic Records



G05_9-R04



G05_67-R008



G06_66-R009



R04
Enkianthus quinqueflorus
Observed since November 2023

Contract No.: NL/2020/02
Tung Chung New Town Extension - Salt Water Supply System
Monthly Report (27 September 2024)
In-situ Plant Species of Conservation Importance - Photographic Records



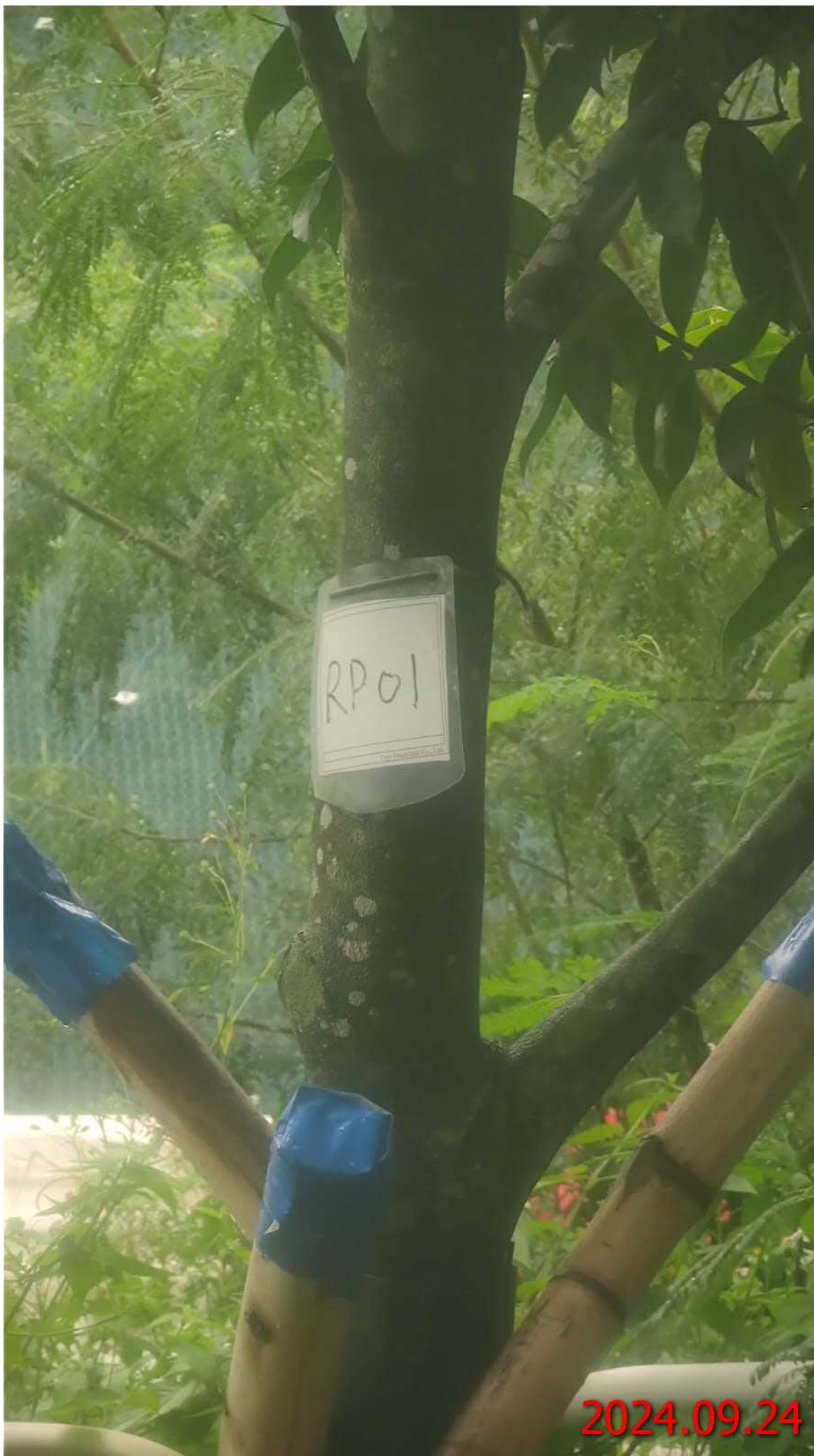
WLH_T047
Aquilaria sinensis
Observed since November 2023

Drawing no.	Tree group no.	Tree No.	Botanical Name	Chinese Name	SIZE			Amenity Value	Form	Health	Structural Condition	Conservation Status	Recommendation in Detailed Preservation and/or Translocation Plan for Plant Species of Conservation Importance for Tung Chung East (Retain/ Transplant/ Fell)	Justification	Remarks
					Height (m)	DBH (mm)	Spread (m)								
60507694/C2/1721	G01/39	R01	<i>Gmelina chinensis</i>	石栎	-	-	-	-	-	-	-	Yes	Retain	-	On Slope, Inaccessible
		R02	<i>Gmelina chinensis</i>	石栎	-	-	-	-	-	-	-	Yes	Retain	-	On Slope, Inaccessible
	G06/59	R018	<i>Gmelina chinensis</i>	石栎	-	-	-	-	-	-	-	Yes	Retain	-	Missing
	G03/61	R019	<i>Gmelina chinensis</i>	石栎	-	-	-	-	-	-	-	Yes	Retain	-	Missing
	G05/62	RT06	<i>Gmelina chinensis</i>	石栎	-	-	-	-	-	-	-	Yes	Transplant	Direct conflict with proposed works	Missing
	G01/81	RT401	<i>Gmelina chinensis</i>	石栎	5	160	3	Good	Poor	Fair	Fair	Yes	Retain	-	On slope, Strangled by Epiphytes
		RT402 (TT535)	<i>Gmelina chinensis</i>	石栎	8	110	3	Good	Poor	Fair	Fair	Yes	Retain	-	On slope, Co-dominant Branches, Strangled by Epiphytes
	-	WLH/T047	<i>Aquilaria sinensis</i>	土沉香	10	250	6	Good	Fair	Fair	Fair	Yes	Retain	-	On slope, Observed since November 2023
	G02/82	RT03	<i>Gmelina chinensis</i>	石栎	-	-	-	-	-	-	-	Yes	Transplant	Direct conflict with proposed works	Missing
	G04/83/84/85	R04 (TT788)	<i>Gmelina chinensis</i>	石栎	9	260	8	Good	Poor	Fair	Fair	Yes	Retain	-	On slope, Multiple Trunks
		R05 (TT572)	<i>Gmelina chinensis</i>	石栎	8	120	5	Good	Poor	Fair	Fair	Yes	Retain	-	On slope, Broken branch
		R05	<i>Gmelina chinensis</i>	石栎	-	-	-	-	-	-	-	Yes	Retain	-	Missing
		R06	<i>Gmelina chinensis</i>	石栎	5	100	3	Good	Fair	Fair	Fair	Yes	Retain	-	On slope
		R07	<i>Gmelina chinensis</i>	石栎	8	166	5	Good	Poor	Fair	Fair	Yes	Retain	-	On slope, Co-dominant Trunks
		R08	<i>Gmelina chinensis</i>	石栎	7	160	5	Good	Poor	Fair	Fair	Yes	Retain	-	On slope, Broken Leader, Epicormics, Imbalanced Crown
R09		<i>Gmelina chinensis</i>	石栎	5	140	4	Good	Poor	Fair	Fair	Yes	Retain	-	On slope, Broken Leader with Epiphyte, Broken Leader with Epicormics	
R010		<i>Gmelina chinensis</i>	石栎	8	110	3	Good	Poor	Fair	Fair	Yes	Retain	-	On slope, Broken Leader with Epicormics	
R011		<i>Gmelina chinensis</i>	石栎	9	130	4	Good	Poor	Fair	Poor	Yes	Retain	-	On slope, Multiple Branches, Leaning without Self-correction	
60507694/C2/1722	G04/21	R03	<i>Gmelina chinensis</i>	石栎	5	120	2	Good	Fair	Fair	Fair	Yes	Retain	-	Underused, On Slope
	-	R04	<i>Entandrus quinqueflorus</i>	吊鐘花	2	130	3	Good	Fair	Fair	Fair	Yes	Retain	-	On slope, Observed since November 2023
	G05/9	R04	<i>Gmelina chinensis</i>	石栎	5	100	2	Good	Fair	Fair	Fair	Yes	Retain	-	On Slope
60507694/C2/1732	G01/30	R001	<i>Gmelina chinensis</i>	石栎	7	110	2	Good	Poor	Fair	Fair	Yes	Retain	-	On Slope
		R002	<i>Gmelina chinensis</i>	石栎	8	120	5	Good	Poor	Poor	Fair	Yes	Retain	-	On slope, Co-dominant Branches, Root Flare was Partially Buried, Dead Stub
		R003	<i>Gmelina chinensis</i>	石栎	5	140	2	Good	Poor	Poor	Fair	Yes	Retain	-	On slope, Bulge at Trunk, Root Flare was Partially Buried, Climber
		R004	<i>Aquilaria sinensis</i>	土沉香	10	150	3	Good	Fair	Fair	Fair	Yes	Retain	-	On slope
		R005	<i>Aquilaria sinensis</i>	土沉香	8	130	3	Good	Fair	Fair	Fair	Yes	Retain	-	On slope
		R006	<i>Aquilaria sinensis</i>	土沉香	-	-	-	-	-	-	-	Yes	Retain	-	Missing
60507694/C2/1732	G02/29	R007	<i>Gmelina chinensis</i>	石栎	10	170	5	Good	Poor	Fair	Fair	Yes	Retain	-	On slope, Co-dominant Branches with Included Bark, Buried Branches, Old trunk trunk on trunk
		R013	<i>Gmelina chinensis</i>	石栎	8	150	7	Good	Poor	Fair	Fair	Yes	Retain	-	On slope, Co-dominant Branches, Epicormics at Branch, Broken Leader with Foudrite
	G03/44	R014	<i>Gmelina chinensis</i>	石栎	7	160	5	Good	Poor	Fair	Fair	Yes	Retain	-	On slope, Co-dominant Branches
		R015	<i>Gmelina chinensis</i>	石栎	6	110	2	Good	Poor	Poor	Fair	Yes	Retain	-	On slope, Broken Leader, Epiphytes
		R016	<i>Gmelina chinensis</i>	石栎	-	-	-	-	-	-	-	Yes	Retain	-	Missing
		R017	<i>Gmelina chinensis</i>	石栎	8	130	4	Good	Poor	Fair	Fair	Yes	Retain	-	On slope, Broken Leader with Epicormics
	G04/45	R010	<i>Gmelina chinensis</i>	石栎	-	-	-	-	-	-	-	Yes	Retain	-	Missing
		R011	<i>Gmelina chinensis</i>	石栎	8	140	7	Good	Poor	Fair	Fair	Yes	Retain	-	On slope, Co-dominant Branches
	G05/67	R012	<i>Gmelina chinensis</i>	石栎	-	-	-	-	-	-	-	Yes	Retain	-	Missing
		R008	<i>Gmelina chinensis</i>	石栎	6	120	4	Good	Fair	Fair	Fair	Yes	Retain	-	On slope
G06/66	R009	<i>Gmelina chinensis</i>	石栎	7	120	5	Good	Poor	Fair	Fair	Yes	Retain	-	On slope, Epicormic at Broken Stump	



ANNEX H2

TRANSPLANTED PLANT SPECIES OF
CONSERVATION IMPORTANCE



RP01 - Tree Label

Contract No. NL/2020/02

Tung Chung New Town Extension—Salt Water Supply System

Additional Tree Planting Work for Planter at Yi Tung Road and Ying Hei Road

Monthly and Quarterly Monitoring Report for the 3 Nos. Replacement Planting *Aquilaria sinensis* (September 2024)

Ref.: C3113/24/TGD6155

Date: 7 October 2024



RP01 - Whole view of tree

Contract No. NL/2020/02

Tung Chung New Town Extension—Salt Water Supply System

Additional Tree Planting Work for Planter at Yi Tung Road and Ying Hei Road

Monthly and Quarterly Monitoring Report for the 3 Nos. Replacement Planting *Aquilaria sinensis* (September 2024)

Ref.: C3113/24/TGD6155

Date: 7 October 2024



RP02 - Tree Label



RP02 - Whole view of tree



RP04 - Tree Label



RP04 - Whole view of tree

Contract No. NL/2020/02

Tung Chung New Town Extension—Salt Water Supply System

Monthly and Quarterly Monitoring Report for the 3 Nos. Replacement Planting *Aquilaria sinensis* (September 2024)

Ref.: C3113/24/TGD6155

Date: 7 October 2024

Tree No.	Botanical Name	Chinese Name	SIZE			Amenity Value	Form	Health	Structural Condition	Conservation Status	Recommendation in Detailed Preservation and/or Translocation Plan for Plant Species of Conservation Importance for Tung Chung East (Retain/ Transplant/ Fell)	Justification	Remarks
			Height (m)	DBH (mm)	Spread (m)								
RP01	<i>Aquilaria sinensis</i>	土沉香	3	79	2	Good	Fair	Fair	Fair	Yes	Retain	-	Replacement Planting
RP02	<i>Aquilaria sinensis</i>	土沉香	3	75	2	Good	Fair	Fair	Fair	Yes	Retain	-	Replacement Planting
RP04	<i>Aquilaria sinensis</i>	土沉香	4	81	2	Good	Fair	Fair	Fair	Yes	Retain	-	Replacement Planting