



ANNEX H

PRESERVED/TRANSPLANTED PLANT
SPECIES OF CONSERVATION
IMPORTANCE MONITORING



ANNEX H1

PRESERVED PLANT SPECIES OF
CONSERVATION IMPORTANCE

Contract No.: NL/2020/02

Tung Chung New Town Extension - Salt Water Supply System

Monthly Report (26 March 2024)

In-situ Plant Species of Conservation Importance - Photographic Records



G01_30-R001



G01_30-R002



G01_30-R003



G01_30-R004

Contract No.: NL/2020/02

Tung Chung New Town Extension - Salt Water Supply System

Monthly Report (26 March 2024)

In-situ Plant Species of Conservation Importance - Photographic Records



G01_30-R005



G01_39-R01_Inaccessible



G01_39-R02_Inaccessible



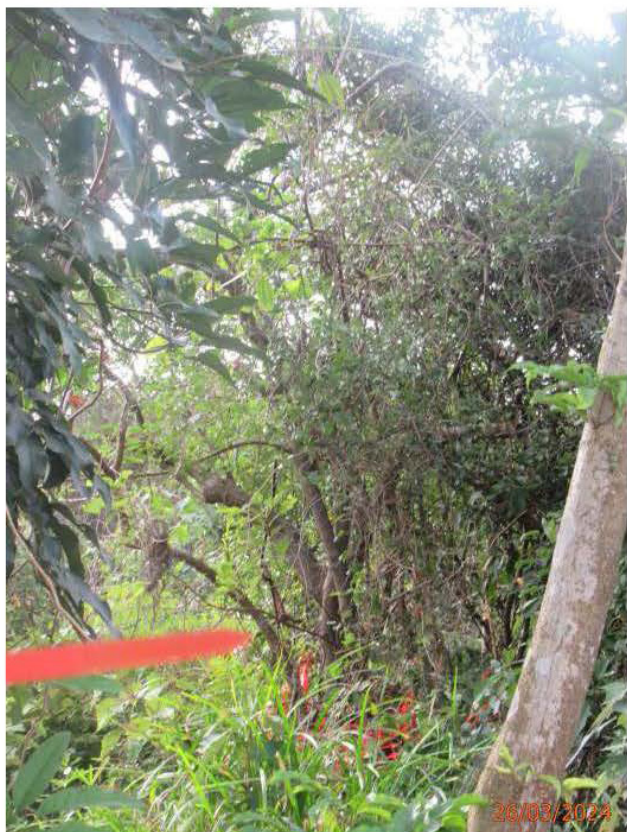
G01_81-RT-01

Contract No.: NL/2020/02

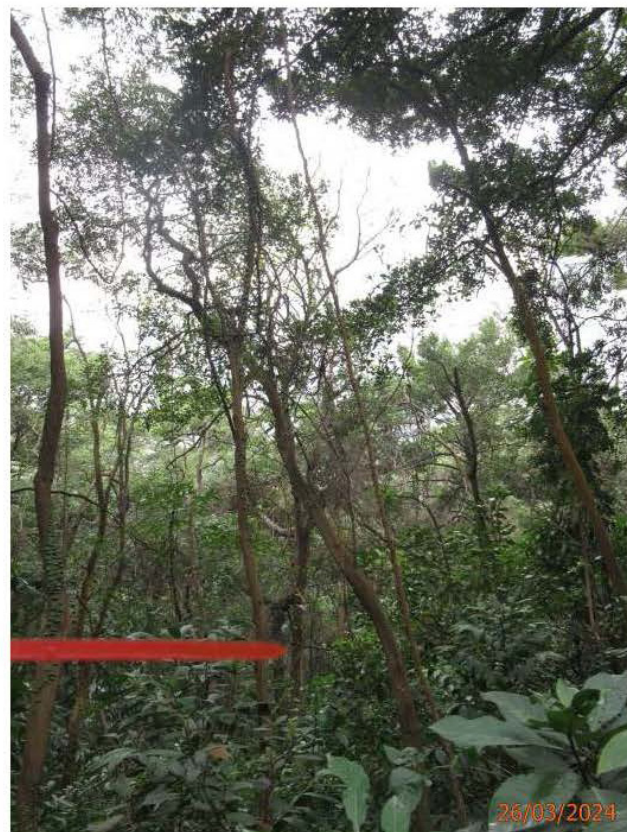
Tung Chung New Town Extension - Salt Water Supply System

Monthly Report (26 March 2024)

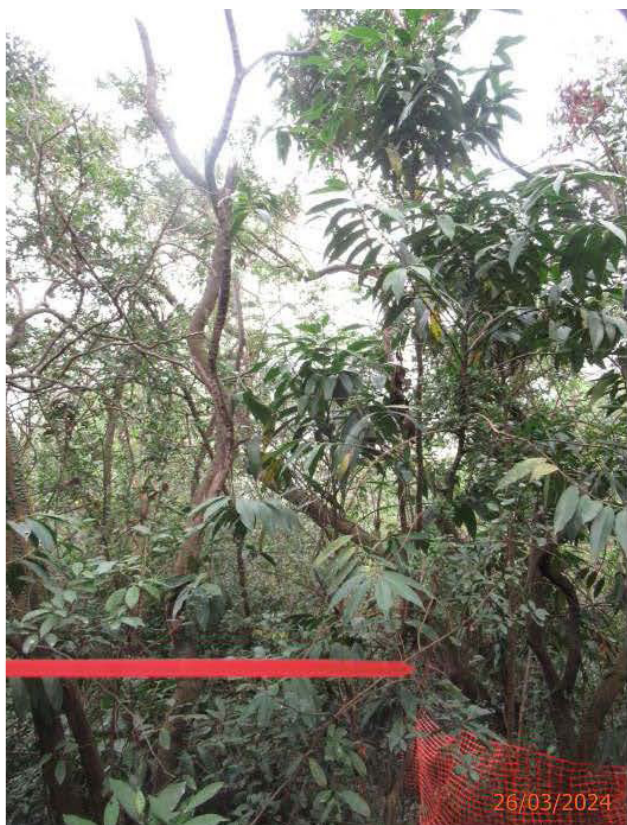
In-situ Plant Species of Conservation Importance - Photographic Records



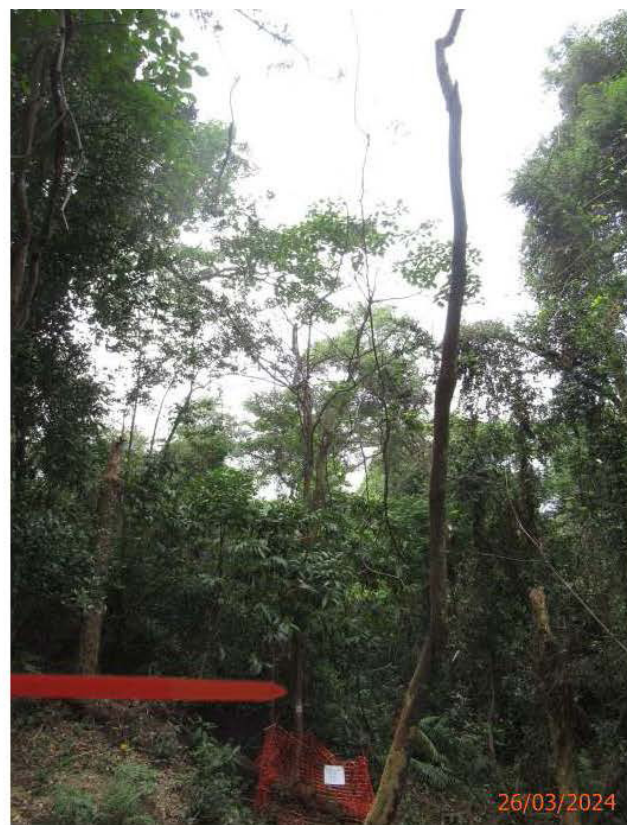
G01_81-RT-02 (T1535)



G02_29-R007



G02_29-R013



G03_44-R014

Contract No.: NL/2020/02

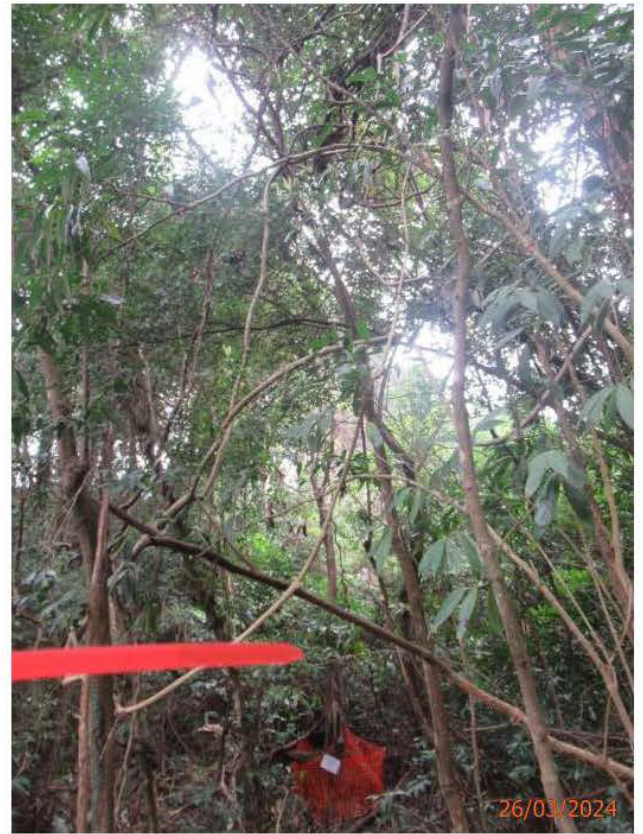
Tung Chung New Town Extension - Salt Water Supply System

Monthly Report (26 March 2024)

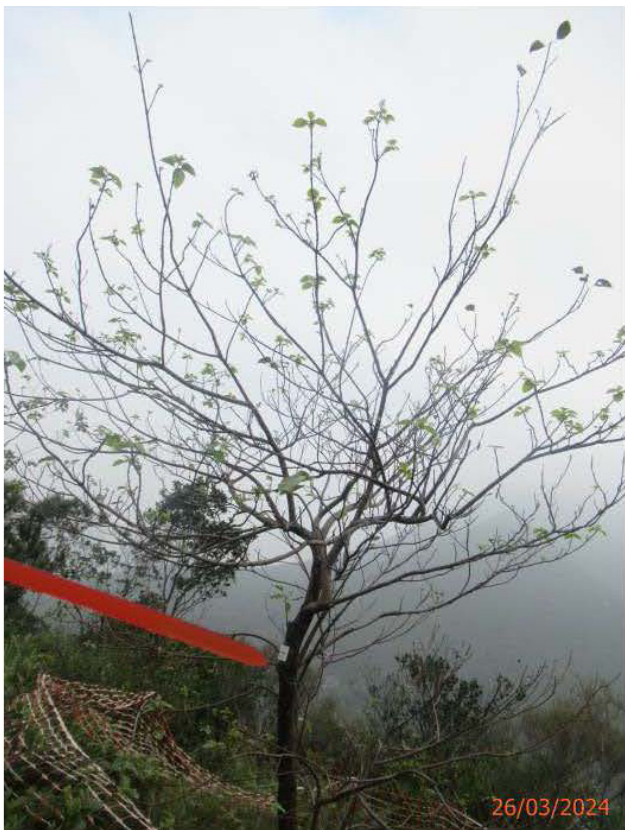
In-situ Plant Species of Conservation Importance - Photographic Records



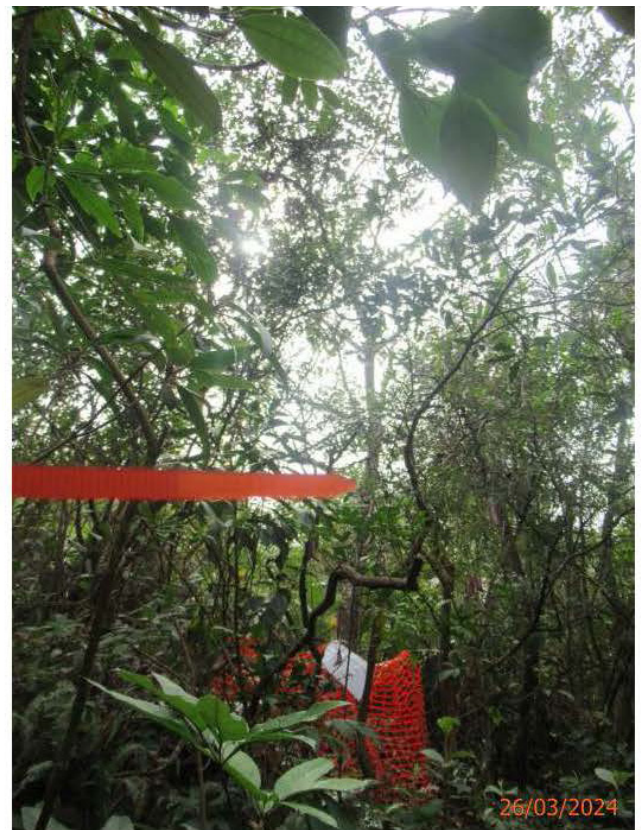
G03_44-R015



G03_44-R017



G04_21-R03



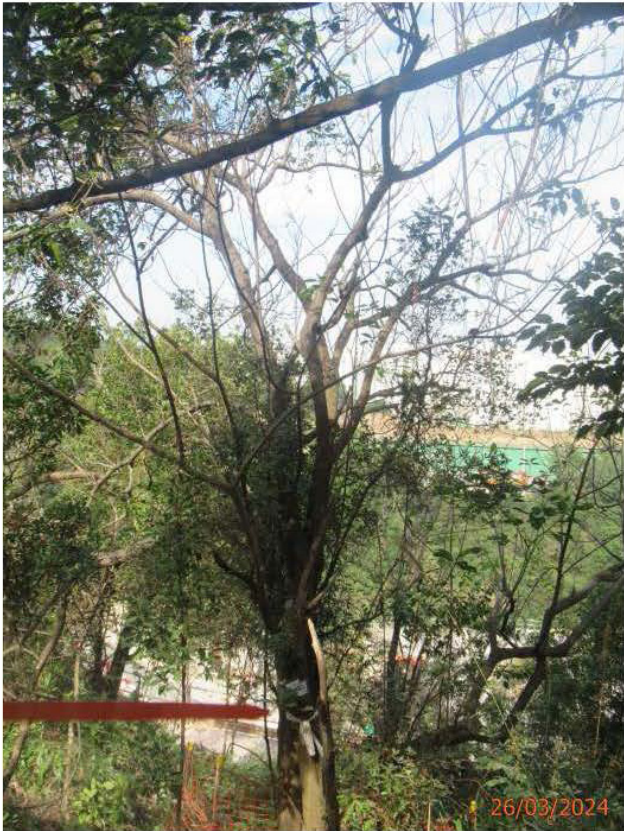
G04_45-R011

Contract No.: NL/2020/02

Tung Chung New Town Extension - Salt Water Supply System

Monthly Report (26 March 2024)

In-situ Plant Species of Conservation Importance - Photographic Records



G04_83_84_85-R04 (T1788)



G04_83_84_85-R05 (T1572)



G04_83_84_85-R06



G04_83_84_85-R07

Contract No.: NL/2020/02

Tung Chung New Town Extension - Salt Water Supply System

Monthly Report (26 March 2024)

In-situ Plant Species of Conservation Importance - Photographic Records



G04_83_84_85-R08



G04_83_84_85-R09



G04_83_84_85-R010



G04_83_84_85-R011

Contract No.: NL/2020/02

Tung Chung New Town Extension - Salt Water Supply System

Monthly Report (26 March 2024)

In-situ Plant Species of Conservation Importance - Photographic Records



G05_9-R04



G05_67-R008



G06_66-R009



R04

Enkianthus quinqueflorus
observed since November 2023

Contract No.: NL/2020/02

Tung Chung New Town Extension - Salt Water Supply System

Monthly Report (26 March 2024)

In-situ Plant Species of Conservation Importance - Photographic Records



WLH_T047

Aquilaria sinensis

observed since November 2023

Drawing no.	Tree group no.	Tree No.	Botanical Name	Chinese Name	SIZE			Amenity Value	Form	Health	Structural Condition	Conservation Status	Recommendation in Detailed Preservation and/or Translocation Plan for Plant Species of Conservation Importance for Tung Chung East (Retain/ Transplant/ Fell)	Justification	Remarks
					Height (m)	DBH (mm)	Spread (m)								
60507694/C2/1721	G01/39	R01	<i>Gmelina chinensis</i>	石梓	-	-	-	-	-	-	-	Yes	Retain	-	On Slope, Inaccessible
		R02	<i>Gmelina chinensis</i>	石梓	-	-	-	-	-	-	-	Yes	Retain	-	On Slope, Inaccessible
	G06/59	R018	<i>Gmelina chinensis</i>	石梓	-	-	-	-	-	-	-	Yes	Retain	-	Missing
	G03/61	R019	<i>Gmelina chinensis</i>	石梓	-	-	-	-	-	-	-	Yes	Retain	-	Missing
	G05/62	RT06	<i>Gmelina chinensis</i>	石梓	-	-	-	-	-	-	-	Yes	Transplant	Direct conflict with proposed works	Missing
	G01/81	RT-01	<i>Gmelina chinensis</i>	石梓	5	160	3	Good	Poor	Fair	Fair	Yes	Retain	-	On slope, Strangled by Epiphytes
		RT-02 (T1535)	<i>Gmelina chinensis</i>	石梓	8	110	3	Good	Poor	Fair	Fair	Yes	Retain	-	On slope, Co-dominant Branches, Strangled by Epiphytes.
	-	WLH/T047	<i>Aquilaria sinensis</i>	土沉香	10	230	6	Good	Fair	Fair	Fair	Yes	Retain	-	On slope, Observed since November 2023
	G02/82	RT03	<i>Gmelina chinensis</i>	石梓	-	-	-	-	-	-	-	Yes	Transplant	Direct conflict with proposed works	Missing
	G04/83/84/85	R04 (T1788)	<i>Gmelina chinensis</i>	石梓	9	260	8	Good	Poor	Fair	Fair	Yes	Retain	-	On slope, Multiple Trunks
		R05 (T1572)	<i>Gmelina chinensis</i>	石梓	8	120	5	Good	Poor	Fair	Fair	Yes	Retain	-	On slope, Broken branch
		R05	<i>Gmelina chinensis</i>	石梓	-	-	-	-	-	-	-	Yes	Retain	-	Missing
		R06	<i>Gmelina chinensis</i>	石梓	5	100	3	Good	Fair	Fair	Fair	Yes	Retain	-	On slope
		R07	<i>Gmelina chinensis</i>	石梓	8	166	5	Good	Poor	Fair	Fair	Yes	Retain	-	On slope, Co-dominant Trunks
		R08	<i>Gmelina chinensis</i>	石梓	7	160	5	Good	Poor	Fair	Fair	Yes	Retain	-	On slope, Broken Leader, Epicormics, Imbalanced Crown
		R09	<i>Gmelina chinensis</i>	石梓	5	140	4	Good	Poor	Fair	Fair	Yes	Retain	-	On slope, Broken Leader with Epiphyte, Broken Leader with Epicormics
		R010	<i>Gmelina chinensis</i>	石梓	8	110	3	Good	Poor	Fair	Fair	Yes	Retain	-	On slope, Broken Leader with Epicormics
R011	<i>Gmelina chinensis</i>	石梓	9	130	4	Good	Poor	Fair	Poor	Yes	Retain	-	On slope, Multiple Branches, Leaning without Self-correction		
60507694/C2/1722	G04/21	R03	<i>Gmelina chinensis</i>	石梓	5	120	2	Good	Fair	Fair	Fair	Yes	Retain	-	Undersized, On Slope
	-	R04	<i>Enkianthus quinqueflorus</i>	吊鐘花	2	130	3	Good	Fair	Fair	Fair	Yes	Retain	-	On slope, Observed since November 2023
	G05/9	R04	<i>Gmelina chinensis</i>	石梓	5	100	2	Good	Fair	Fair	Fair	Yes	Retain	-	On Slope
60507694/C2/1732	G01/30	R001	<i>Gmelina chinensis</i>	石梓	7	110	2	Good	Poor	Fair	Fair	Yes	Retain	-	On Slope
		R002	<i>Gmelina chinensis</i>	石梓	8	120	5	Good	Poor	Poor	Fair	Yes	Retain	-	On slope, Co-dominant Branches, Root Flare was Partially Buried, Dead Stub
		R003	<i>Gmelina chinensis</i>	石梓	5	140	2	Good	Poor	Poor	Fair	Yes	Retain	-	On slope, Bulge at Trunk, Root Flare was Partially Buried, Climber
		R004	<i>Aquilaria sinensis</i>	土沉香	10	150	3	Good	Fair	Fair	Fair	Yes	Retain	-	On slope
		R005	<i>Aquilaria sinensis</i>	土沉香	8	130	3	Good	Fair	Fair	Fair	Yes	Retain	-	On slope
		R006	<i>Aquilaria sinensis</i>	土沉香	-	-	-	-	-	-	-	Yes	Retain	-	Missing
	G02/29	R007	<i>Gmelina chinensis</i>	石梓	10	170	5	Good	Poor	Fair	Fair	Yes	Retain	-	On slope, Co-dominant Branches with Included Bark, Crossed Branches, Old termite tracks on trunk
		R013	<i>Gmelina chinensis</i>	石梓	8	150	7	Good	Poor	Fair	Fair	Yes	Retain	-	On slope, Co-dominant Branches, Epicormics at Branch, Broken Leader with Epiphyte
	G03/44	R014	<i>Gmelina chinensis</i>	石梓	7	160	5	Good	Poor	Fair	Fair	Yes	Retain	-	On slope, Co-dominant Branches
		R015	<i>Gmelina chinensis</i>	石梓	6	110	2	Good	Poor	Poor	Fair	Yes	Retain	-	On slope, Broken Leader, Epiphytes
		R016	<i>Gmelina chinensis</i>	石梓	-	-	-	-	-	-	-	Yes	Retain	-	Missing
	G04/45	R017	<i>Gmelina chinensis</i>	石梓	8	130	4	Good	Poor	Fair	Fair	Yes	Retain	-	On slope, Broken Leader with Epicormics
		R010	<i>Gmelina chinensis</i>	石梓	-	-	-	-	-	-	-	Yes	Retain	-	Missing
		R011	<i>Gmelina chinensis</i>	石梓	8	140	7	Good	Poor	Fair	Fair	Yes	Retain	-	On slope, Co-dominant Branches
R012	<i>Gmelina chinensis</i>	石梓	-	-	-	-	-	-	-	Yes	Retain	-	Missing		
G05/67	R008	<i>Gmelina chinensis</i>	石梓	6	120	4	Good	Fair	Fair	Fair	Yes	Retain	-	On slope	
G06/66	R009	<i>Gmelina chinensis</i>	石梓	7	120	5	Good	Poor	Fair	Fair	Yes	Retain	-	On slope, Epicormic at Broken Stump	



ANNEX H2

TRANSPLANTED PLANT SPECIES OF
CONSERVATION IMPORTANCE

Contract No. NL/2020/02

Tung Chung New Town Extension—Salt Water Supply System

Monthly Monitoring Report for the 3 Nos. Replacement Planting *Aquilaria sinensis* (March 2024)

Ref.: C3113/24/TGD1832

Date: 1 April 2024



RP01-A



RP01-B

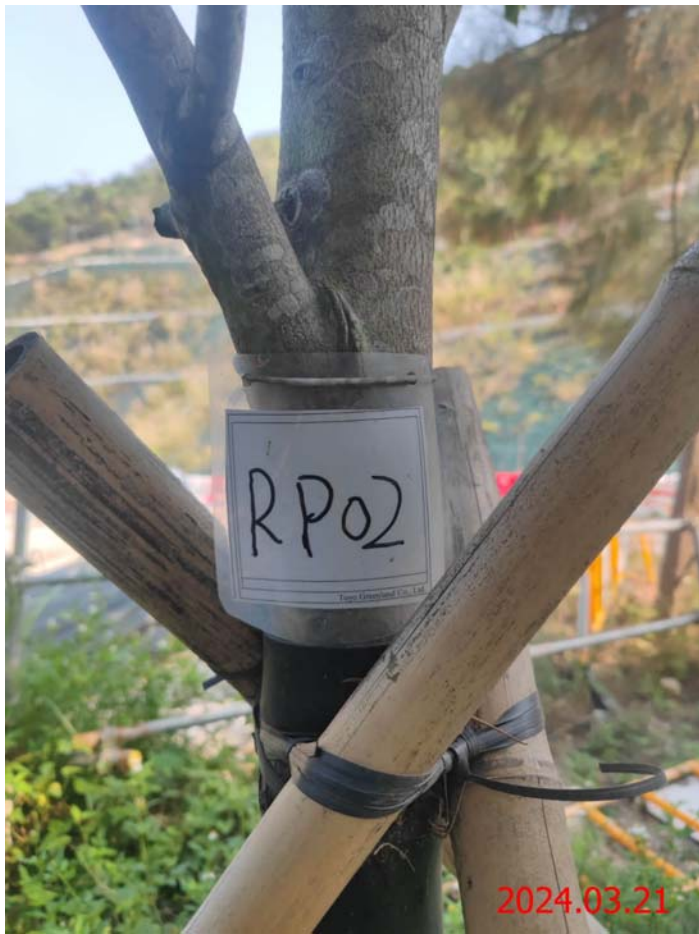
Contract No. NL/2020/02

Tung Chung New Town Extension—Salt Water Supply System

Monthly Monitoring Report for the 3 Nos. Replacement Planting *Aquilaria sinensis* (March 2024)

Ref.: C3113/24/TGD1832

Date: 1 April 2024



RP02-A



RP02-B

Contract No. NL/2020/02

Tung Chung New Town Extension—Salt Water Supply System

Monthly Monitoring Report for the 3 Nos. Replacement Planting *Aquilaria sinensis* (March 2024)

Ref.: C3113/24/TGD1832

Date: 1 April 2024



RP04-A



RP04-B

Tree No.	Botanical Name	Chinese Name	SIZE			Amenity Value	Form	Health	Structural Condition	Conservation Status	Recommendation in Detailed Preservation and/or Translocation Plan for Plant Species of Conservation Importance for Tung Chung East (Retain/ Transplant/ Fell)	Justification	Remarks
			Height (m)	DBH (mm)	Spread (m)								
RP01	<i>Aquilaria sinensis</i>	土沉香	4.5	79	2.5	Good	Fair	Fair	Fair	Yes	Retain	-	Replacement Planting
RP02	<i>Aquilaria sinensis</i>	土沉香	4.5	75	2.5	Good	Fair	Fair	Fair	Yes	Retain	-	Replacement Planting
RP04	<i>Aquilaria sinensis</i>	土沉香	4	81	2	Good	Fair	Fair	Fair	Yes	Retain	-	Replacement Planting