

Annex H2

# Transplanted Plant Species of Conservation Importance Monitoring



Photo 01: Tree tag of G62/ RT-07



Photo 02: Root collar of G62/ RT-07



Photo 03: Crown condition of G62/RT-07



Photo 04: Whole view of G62/RT-07



Photo 05: Tree tag of G62/ RT-08



Photo 06: Root collar of G62/RT-08



Photo 07: Crown condition of G62/RT-08



Photo 08: Whole view for G62/RT-08



Photo 01: Tree tag of G62/ RT-07



Photo 02: Root collar of G62/ RT-07



Photo 03: Crown condition of G62/RT-07



Photo 04: Whole view of G62/RT-07



Photo 05: Tree tag of G62/ RT-08



Photo 06: Root collar of G62/RT-08



Photo 07: Crown condition of G62/RT-08



Photo 08: Whole view for G62/RT-08

Inspection date: 15 June 2022



Photo 01: Tree tag of G62/ RT-07



Photo 02: Root collar of G62/ RT-07



Photo 03: Crown condition of G62/RT-07



Photo 04: Whole view of G62/RT-07



Photo 05: Tree tag of G62/ RT-08



Photo 06: Root collar of G62/RT-08

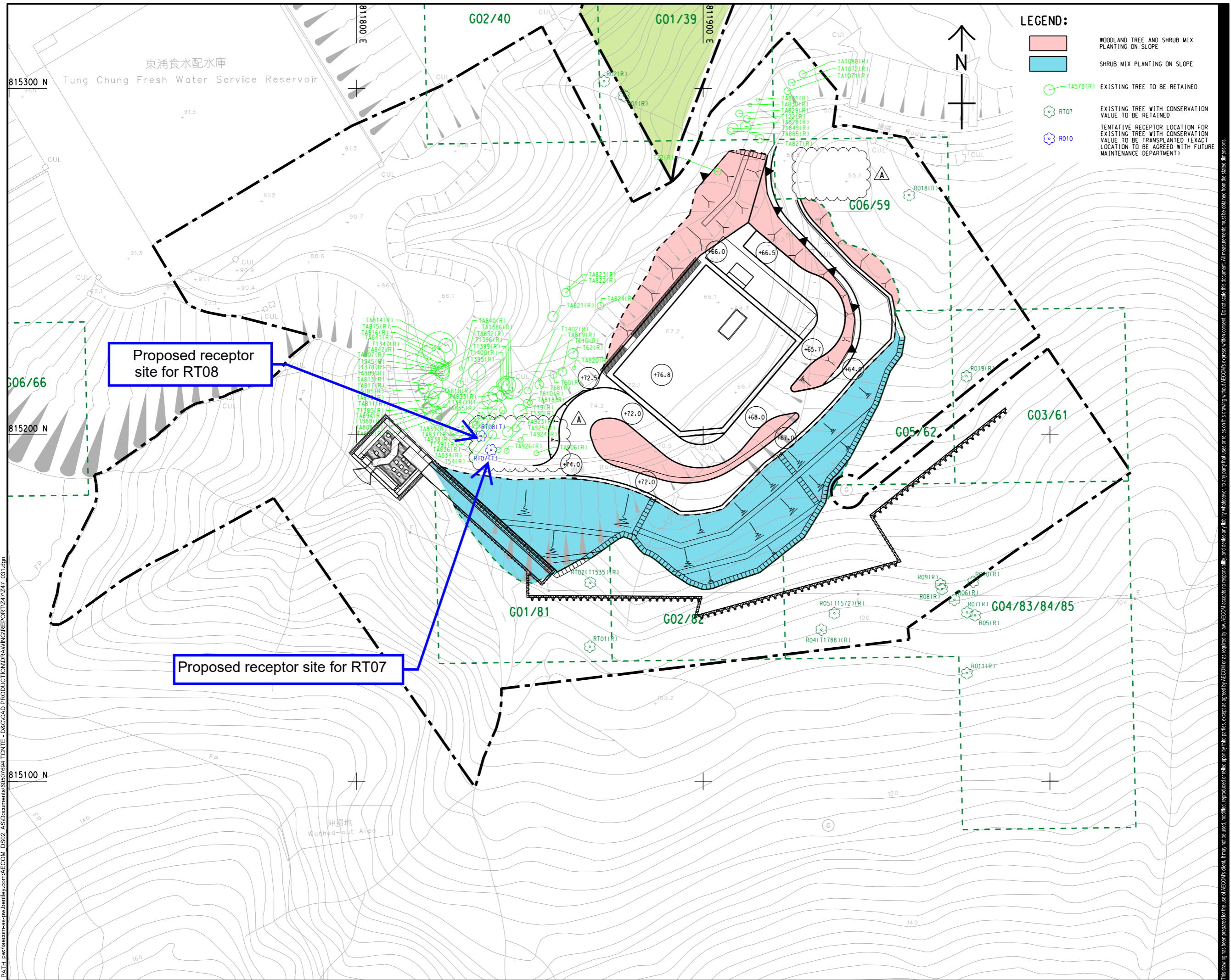


Photo 07: Crown condition of G62/RT-08



Photo 08: Whole view for G62/RT-08

ISO A1 594mm x 841mm  
 Approved:  
 Checked:  
 Designer:  
 Project Management Initials:  
 Plot File by: Shuyun.Wang@aecom.com  
 11-November-2020  
 PATH: p:\aecom\p-w\benley.com\AECOM\_DSO2\_ASI\Documents\60507694\_TCNTE - D&C\CAD PRODUCTION\DRAWING\REPORT\Z47\_Z47\_031.dgn



**LEGEND:**

- WOODLAND TREE AND SHRUB MIX PLANTING ON SLOPE
- SHRUB MIX PLANTING ON SLOPE
- TA578(R) EXISTING TREE TO BE RETAINED
- ⊗ RT07 EXISTING TREE WITH CONSERVATION VALUE TO BE RETAINED
- ⊗ RT08 TENTATIVE RECEPTOR LOCATION FOR EXISTING TREE WITH CONSERVATION VALUE TO BE TRANSPLANTED (EXACT LOCATION TO BE AGREED WITH FUTURE MAINTENANCE DEPARTMENT)

**AECOM**

**PROJECT**  
 TUNG CHUNG NEW TOWN EXTENSION (EAST) - DESIGN AND CONSTRUCTION

**CLIENT**  
 土木工程拓展署  
 Civil Engineering and Development Department

**CONSULTANT**  
 AECOM Asia Company Ltd.  
 www.aecom.com

**SUB-CONSULTANTS**  
 分判工程師/公司

**ISSUE/REVISION**

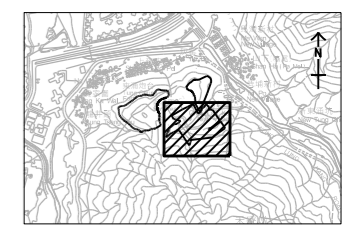
NO.	DATE	DESCRIPTION	CHK.
A	NOV. 20	REVISED LAYOUT	CC
-	OCT. 20	FIRST ISSUE	CC

**STATUS**  
 阶段

**SCALE**      **DIMENSION UNIT**

A1 1:500      METRES

**KEY PLAN**    A1 1:20000



**PROJECT NO.**      **CONTRACT NO.**

60507694      CE 69/2015 (CE)

**SHEET TITLE**

LOCATION OF RECEPTOR SITE FOR THE TRANSPLANTED PLANTS OF CONSERVATION IMPORTANCE

**SHEET NUMBER**

60507694/Z47/FIGURE 3

This drawing has been prepared for the use of AECOM's client. It may not be used, modified, reproduced or relied upon by third parties, except as agreed by AECOM or as required by law. AECOM accepts no responsibility, and disclaims any liability whatsoever, for any party that uses or relies on this drawing, without AECOM's express written consent. All measurements must be obtained from the stated dimensions.