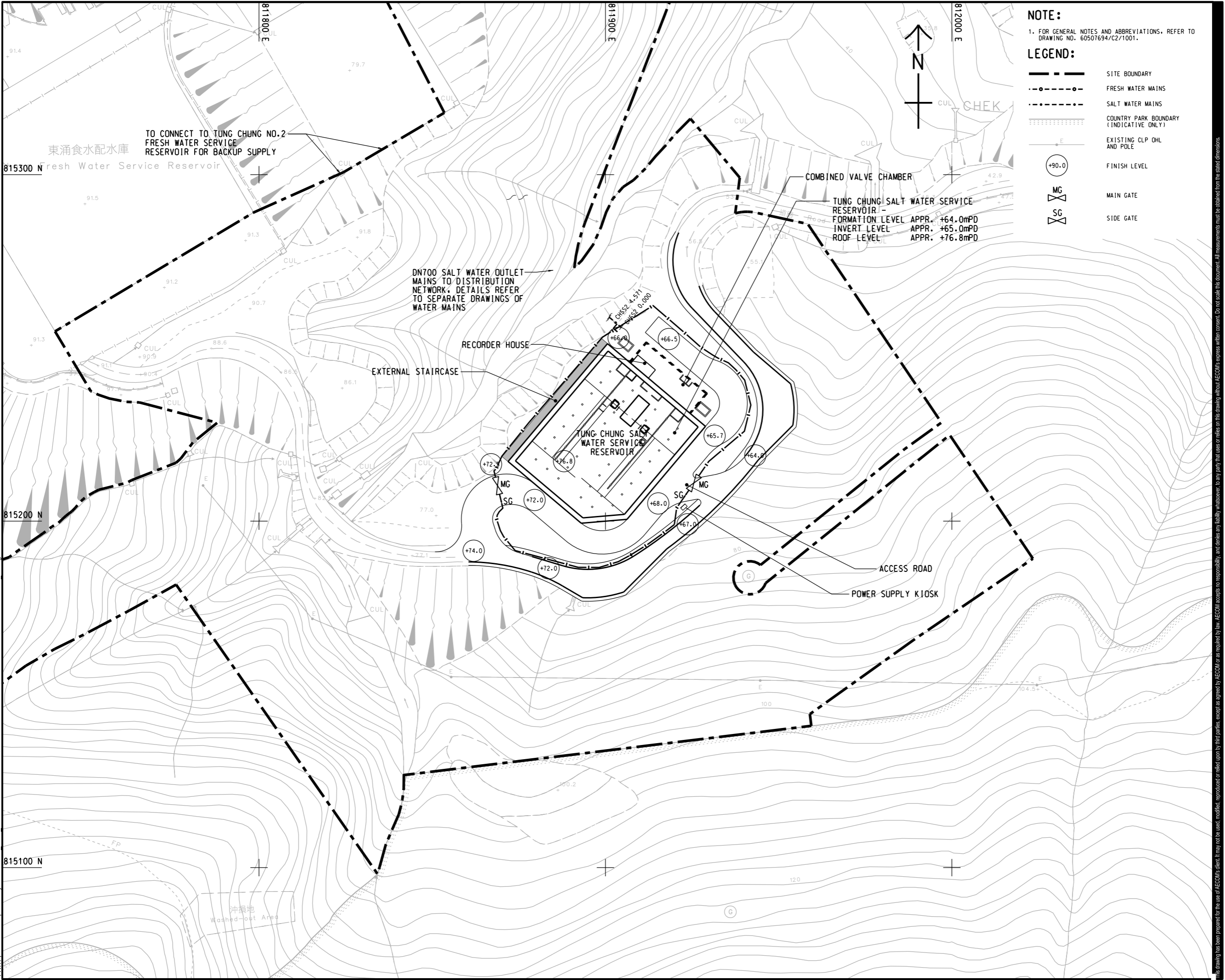


ISO A1 594mm x 841mm  
 Approved:  
 Checked:  
 Designer:  
 Project Management Initials:  
 12-August-2020  
 PATH: p:\aecom\as-pw\benley.com\AECOM\_DSD2\_ASI\Documents\60507694\_TC\NTE - DSD\CAD PRODUCTION\DRAWING\REPORT\C28\C28\_012.dgn  
 Plot File by: Mengting.Wu@aecom.com  
 This drawing has been prepared for the use of AECOM's client. It may not be used, modified, reproduced or relied upon by third parties, except as agreed by AECOM or as required by law. AECOM accepts no responsibility, and disclaims any liability whatsoever, for any party that uses or relies on this drawing without AECOM's express written consent. All measurements must be obtained from the stated dimensions.



**NOTE:**  
 1. FOR GENERAL NOTES AND ABBREVIATIONS, REFER TO DRAWING NO. 60507694/C2/1001.

**LEGEND:**

- SITE BOUNDARY
- FRESH WATER MAINS
- SALT WATER MAINS
- COUNTRY PARK BOUNDARY (INDICATIVE ONLY)
- EXISTING CLP OHL AND POLE
- FINISH LEVEL
- MAIN GATE
- SIDE GATE



**PROJECT**  
 TUNG CHUNG NEW TOWN EXTENSION (EAST) - DESIGN AND CONSTRUCTION

**CLIENT**  
 土木工程拓展署  
 CEDD  
 Civil Engineering and Development Department

**CONSULTANT**  
 AECOM Asia Company Ltd.  
 www.aecom.com

**SUB-CONSULTANTS**  
 分列工程師有限公司

**ISSUE/REVISION**

I/R	DATE	DESCRIPTION	CHK.

**STATUS**

**SCALE**  
 A1 1 : 500

**DIMENSION UNIT**  
 METRES

**KEY PLAN**

**PROJECT NO.**  
 60507694

**CONTRACT NO.**  
 CE 69/2015 (CE)

**SHEET TITLE**  
 LOCATION AND LAYOUT PLAN OF SWSR

**SHEET NUMBER**  
 60507694/Z47/FIGURE 2